

Direct Graphic Printing Specifications

Rack panels are made of aluminum with an anodized or powdercoat finish.

Wall plates are made of either aluminum or stainless steel and come in a variety of finishes.

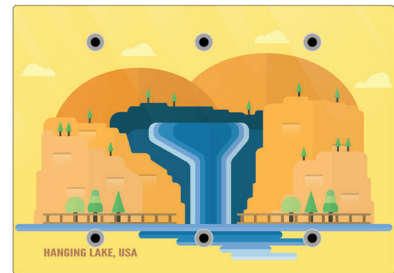
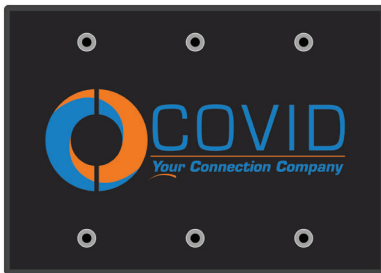
Standard Finishes:

- Clear Anodized
- Black Anodized
- White Powder Coat
- Black Powder Coat
- Ivory Powder Coat
- Stainless Steel

Custom Finishes:

- Cardinal Colorful Powder Coat (Over 100 Colors)
 - *Special Pantone Color Matching available on request*
- DuPont RAL Powder Coat (Over 190 Colors)

Full color printing is available for creating branded plates and panels with your company's logo, graphics and info.



Have questions? We're here to help.
800.638.6104 | www.covid.com



Direct Graphic Printing Specifications

Rack Panel Printable Area

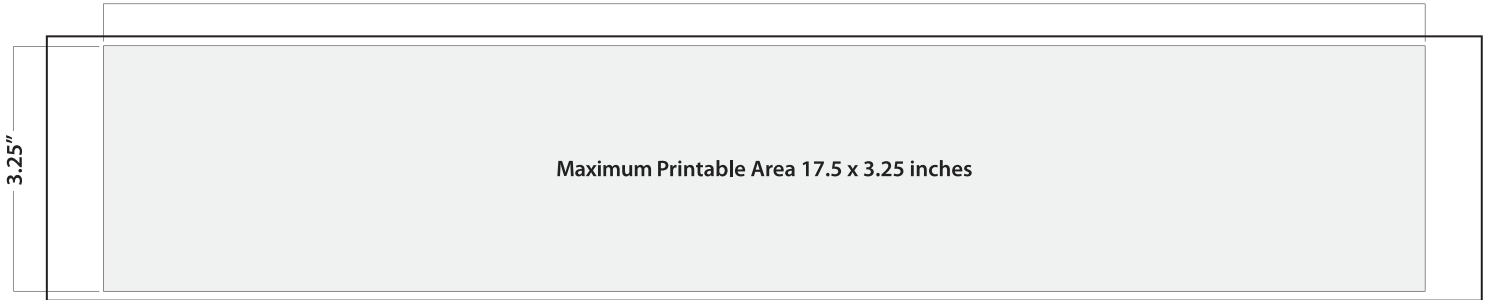
Prepare art at actual size within the maximum printable area.

1 RU



Panel Size 19x1.75 inches

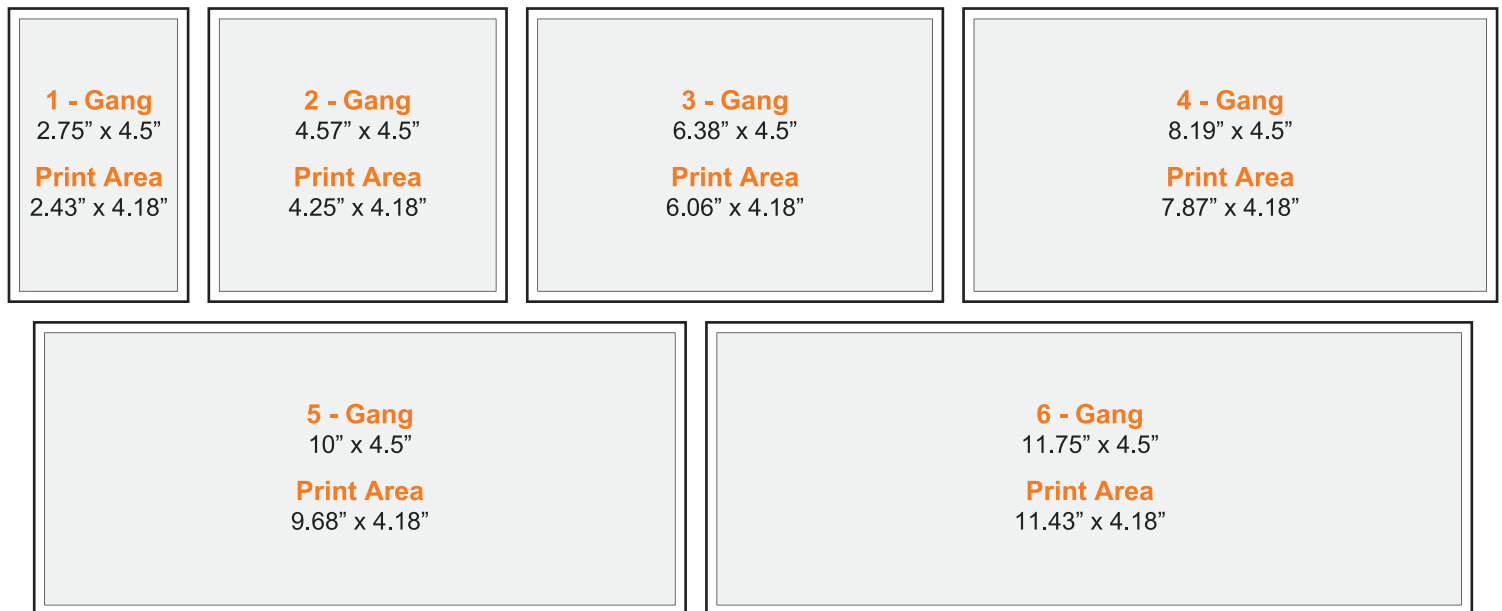
2 RU



Panel Size 19x3.5 inches

Wall Plate Printable Area

Prepare art at actual size within the maximum printable area.



Artwork Requirements

Vector art is required for all logos and graphics (File types include: **.AI / .EPS / .PDF / .SVG**)

- Basic artwork setup is included in price.
- **If the artwork file is not printable or not high enough quality, you will be asked to either:**

- Provide a better quality file with clean vectors

OR

- Pay a graphic design fee and we will remake your file (We will send you the rebuilt file for future use)

Please email all artwork to: sales@covid.com