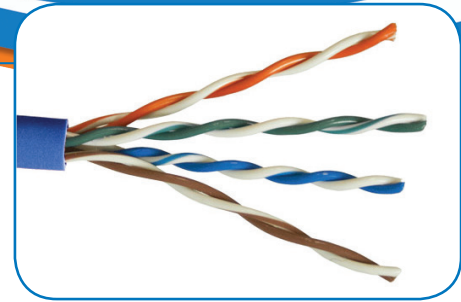


C5EB

Cat 5e, 350 MHz - REELEX BOX

Description Category 5e Cable - HDBT Certified
 Unshielded - Solid Conductors - Non-Plenum



Construction

Conductor

Material: 24 AWG Bare Solid Copper

Insulation

Material: HDPE
 Diameter: 0.87+/-0.03mm

Pairing

2 Insulated Conductors twisted together with varied lay lengths.

Color Code

Pair#1: Blue and White/Blue
 Pair#2: Orange and White/Orange
 Pair#3: Green and White/Green
 Pair#4: Brown and White/Brown

Rip Cord

Nylon

Jacket

Material: FR-PVC
 Colors: Blue

Overall Diameter:

5.0 +/-0.4mm

UL Listing

Type CMR as Specified in Article 800 of the National Electric Code.

Electrical Characteristics

Impedance	100+/-15
Delay Shew (ns/100m)	<-45
DC Resistance/100m max.	9.5
DC Conductor Resistance Unbalanced(%) max.	5.0

Frequency	RL	ATT	NEXT	Phase Delay	PS-NEXT	ELFEXT	PS-ELFEXT
	dB	dB	dB	ns	dB	dB	dB
MHz	Minimum	Minimum	Maximum	Minimum	Minimum	Minimum	Minimum
1	20.0	2.0	65.3	570	62.3	63.8	60.8
4	23.0	4.1	56.3	552	53.3	51.8	48.7
8	24.5	5.8	51.8	546.73	48.8	45.7	42.7
10	25.0	6.5	50.3	545.38	47.3	43.8	40.8
16	25.0	8.2	47.2	543	44.4	39.7	36.7
20	25.0	9.3	45.8	542.05	42.8	37.7	34.8
25	24.3	10.4	44.3	541.20	41.3	35.8	32.8
31.25	23.6	11.7	42.9	540.44	39.9	33.9	30.9
62.5	21.5	17.0	38.4	538.55	35.4	27.9	24.9
100	20.1	22.0	35.3	537.60	32.3	23.8	20.8
155	18.0	28.1	32.4	536.90	29.4	20.0	17.0
200	17.4	32.4	30.8	536.50	27.8	17.8	14.8
300	16.5	41.8	29.3	536.10	26.3	14.3	11.3
350	16.0	44.9	27.1	535.90	24.1	12.9	9.9