

# USER MANUAL



## HDBase-T Smart System Key Pad - KP-100

1723 W. 4th Street Tempe Arizona 85281

P: 800.638.6104 | F: 480.966.6728 | E: [sales@covid.com](mailto:sales@covid.com) | [www.covid.com](http://www.covid.com)

# USER MANUAL



## Table of Contents

1. Introduction . . . . .	2
2. Control Panel Front and Rear Panel . . . . .	2-3
3. Connection Diagram . . . . .	3
4. System on/Off Subroutine . . . . .	4
5. Display On/Off Subroutine . . . . .	5
Warranty . . . . .	6
Safety Information . . . . .	6

### **Thank you for purchasing this product**

For optimum performance and safety, please read these instructions carefully before connecting, operating, or adjusting this product. Please keep this manual for future reference.

### **Surge protection device recommended**

This product contains sensitive electrical components that may be damaged by electrical spikes, surges, electric shock, lightning strikes, etc. In order to protect and extend the life of your equipment, use of surge protection systems is highly recommended.

## HDBase-T Smart System Key Pad - KP-100

1723 W. 4th Street Tempe Arizona 85281

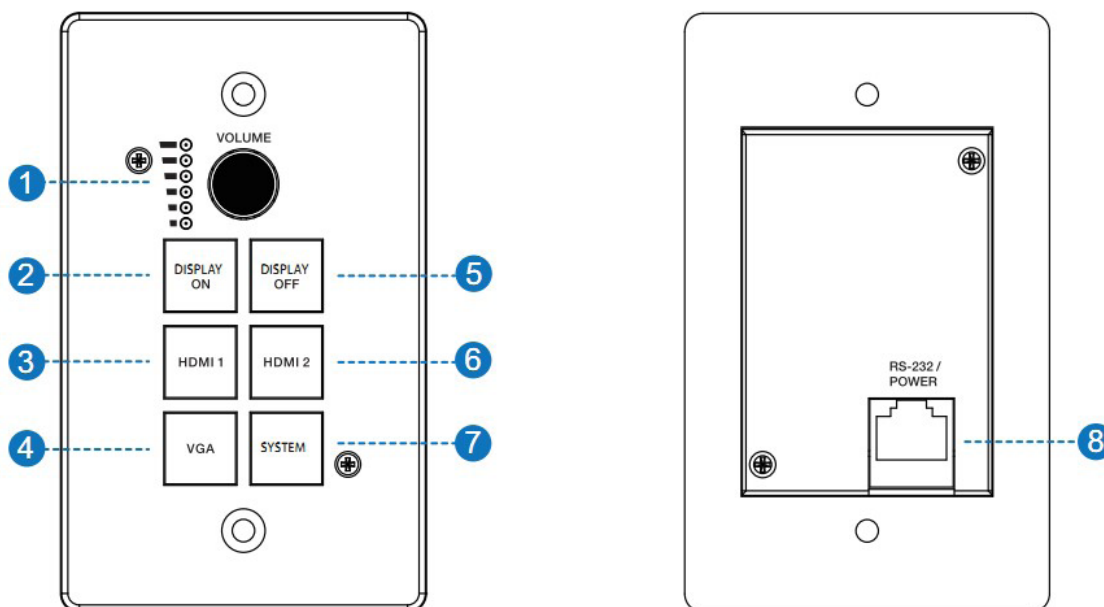
P: 800.638.6104 | F: 480.966.6728 | E: sales@covid.com | www.covid.com

Page 1

## 1. Introduction

The KP-100 extends the function of the P31H-01 by adding remote button control for volume, video switching, and system control routines.

## 2. Control Panel Front and Rear Panel



**1. VOLUME Knob and Volume level indicator:** Adjust amplifier and line out output volume.

- Clockwise adjustment to increase the volume.
- Counter-clockwise adjustment to decrease the volume.

**2. DISPLAY ON:** Run Display ON Subroutine, see section 5. Press and hold button to close relay 1.

**3. HDMI 1:** Select HDMI 1 signal as input source.

**4. VGA:** Select VGA signal as input source.

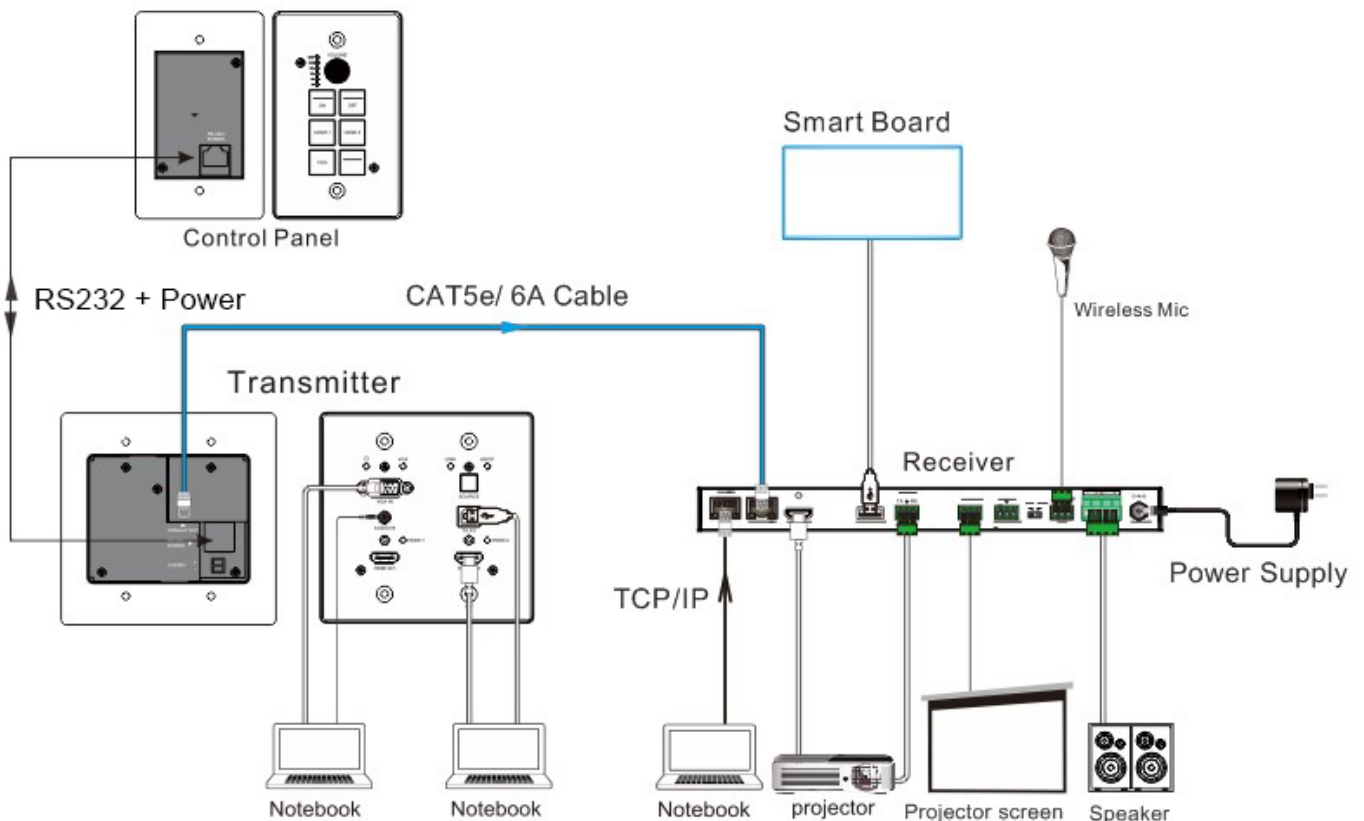
**5. DISPLAY OFF:** Run Display OFF Subroutine, see section 5. Press and hold button to close relay 2.

## HDBase-T Smart System Key Pad - KP-100

# USER MANUAL



- 6. HDMI 2:** Select HDMI 2 signal as input source.
- 7. SYSTEM:** Long-press this button for 3 seconds to run System ON/OFF Subroutine, see section 4
- 8. RS-232/POWER:** Connects to Transmitter via CAT5e/6/7 cable.



## HDBase-T Smart System Key Pad - KP-100

1723 W. 4th Street Tempe Arizona 85281

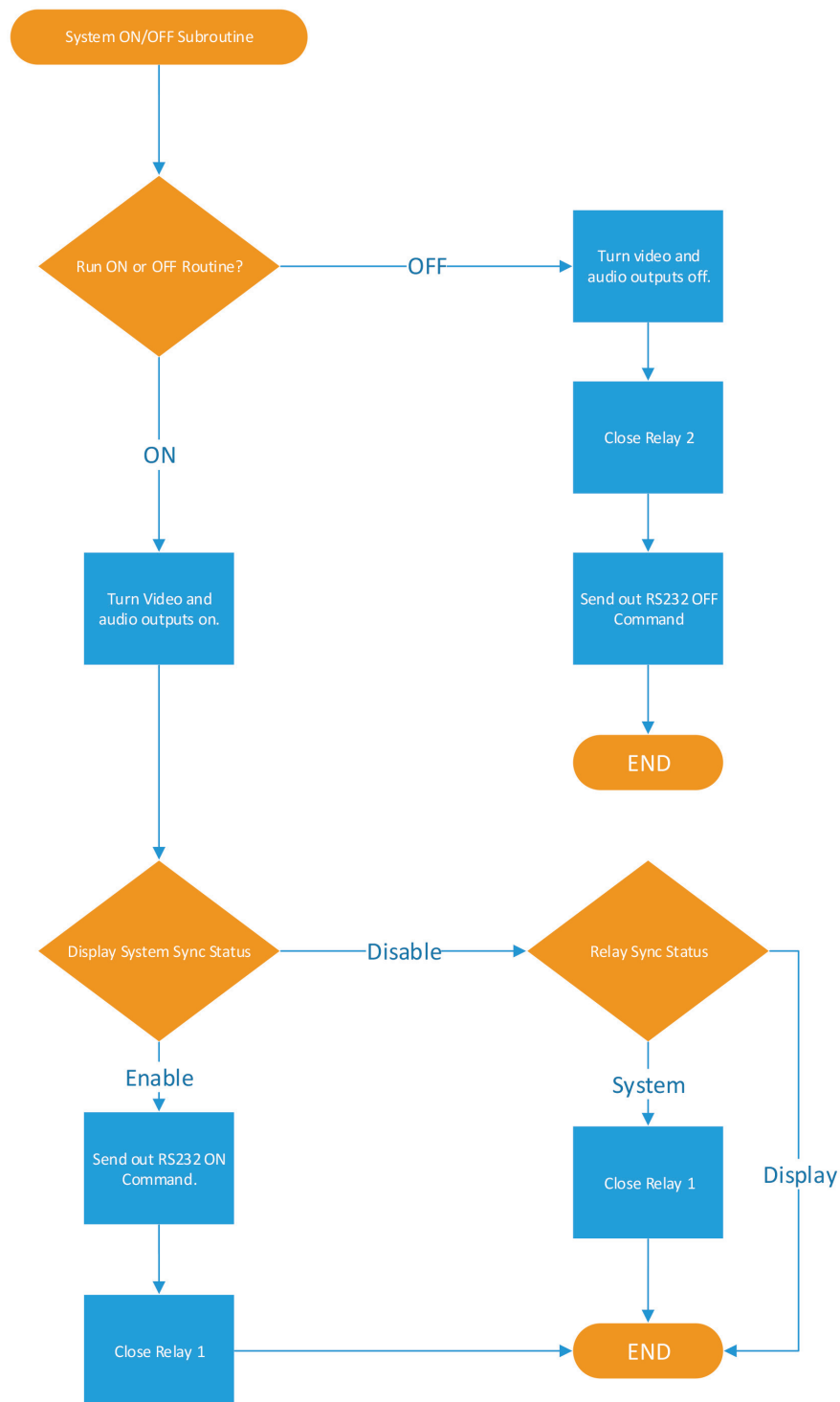
P: 800.638.6104 | F: 480.966.6728 | E: sales@covid.com | www.covid.com

Page 3

# USER MANUAL



## 4. SYSTEM ON/OFF SUBROUTINE

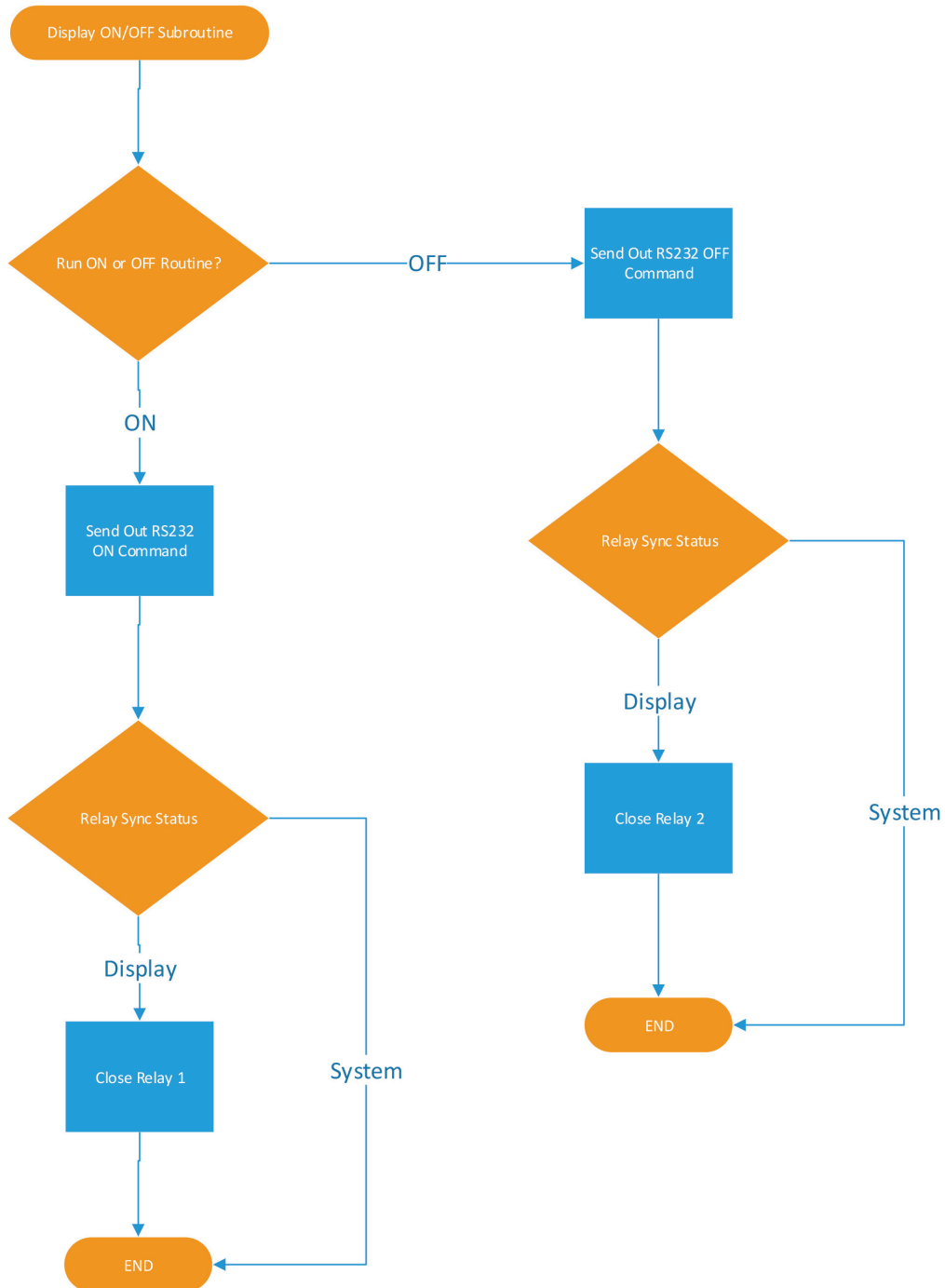


## HDBase-T Smart System Key Pad - KP-100

# USER MANUAL



## 5. DISPLAY ON/OFF SUBROUTINE



## HDBase-T Smart System Key Pad - KP-100

## Warranty

Parts and labor warranty time is three year and from the date of original shipment. This warranty shall be void if a serial number has been removed from the product.

Upon determination of a legitimate defect covered by this warranty and at COVID's sole discretion, user should bear the transport cost during the warranty.

If product is out of warranty then repair charge is required. Out of warranty repairs will only be made after cost has been approved by Customers and proper financial arrangements are made. Customer must cover round trip shipment expenses.

## Safety Information



To reduce the risk of electric shock, do not expose this product to rain or moisture.



Do not modify the wall plug. Doing so will void the warranty and safety features.



If the wall plug does not fit into your local power socket, hire an electrician to replace your obsolete socket.



This equipment should be installed near the socket outlet and the device should be easily accessible in the case it requires disconnection.

## HDBase-T Smart System Key Pad - KP-100