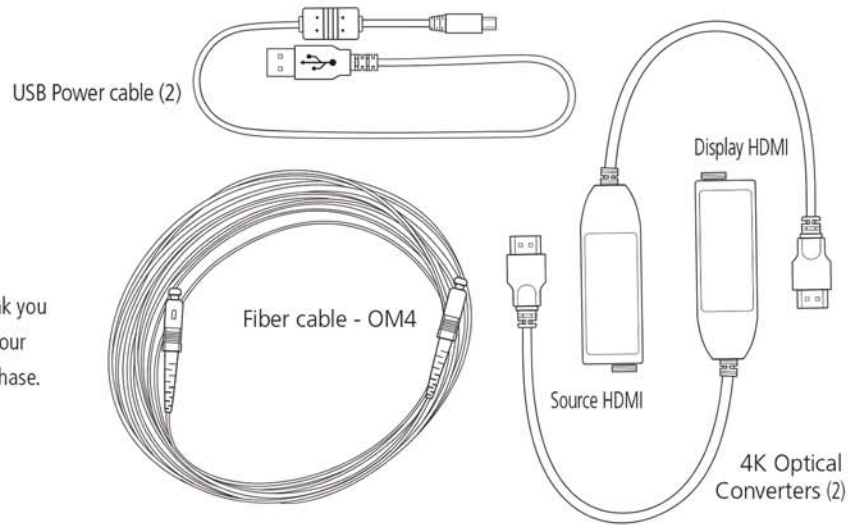




QUICK START GUIDE

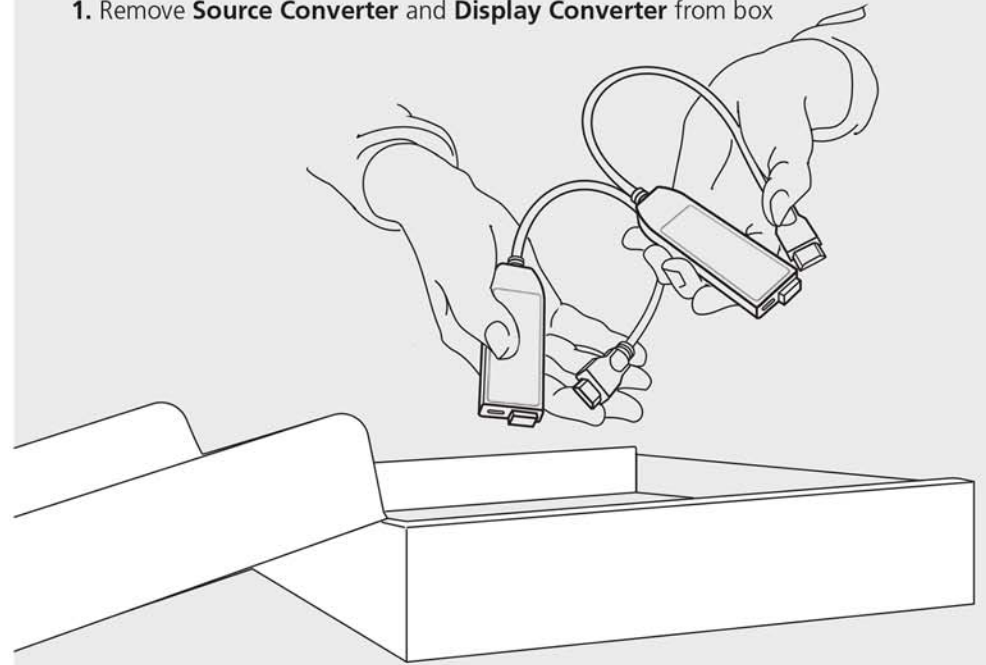
4K™ Optical Adapter & Cables



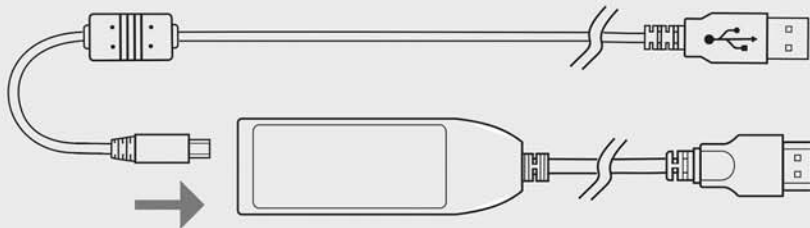
Thank you
for your
purchase.

Go to www.covid.com for more information.

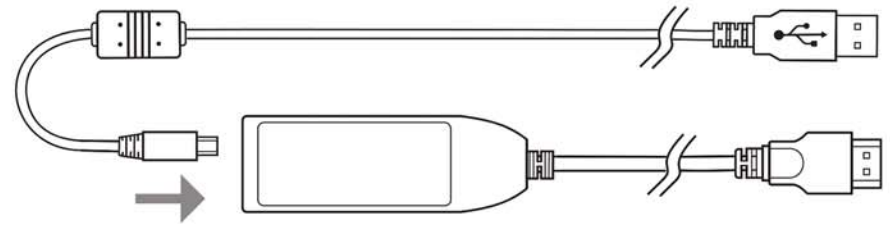
1. Remove **Source Converter** and **Display Converter** from box



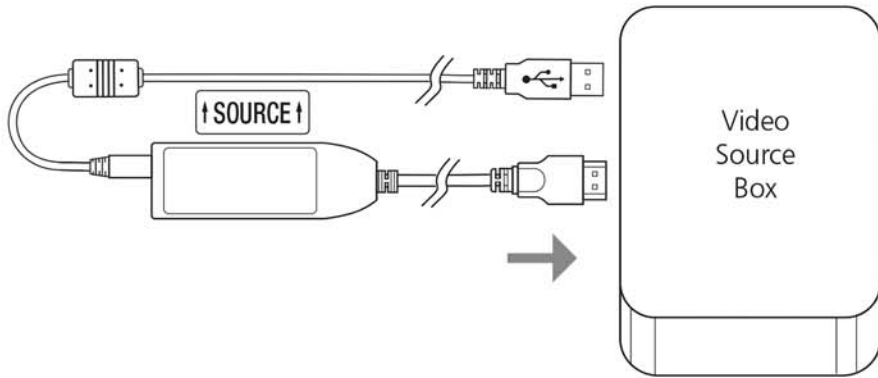
2. Plug **USB cable** into **Source Converter**



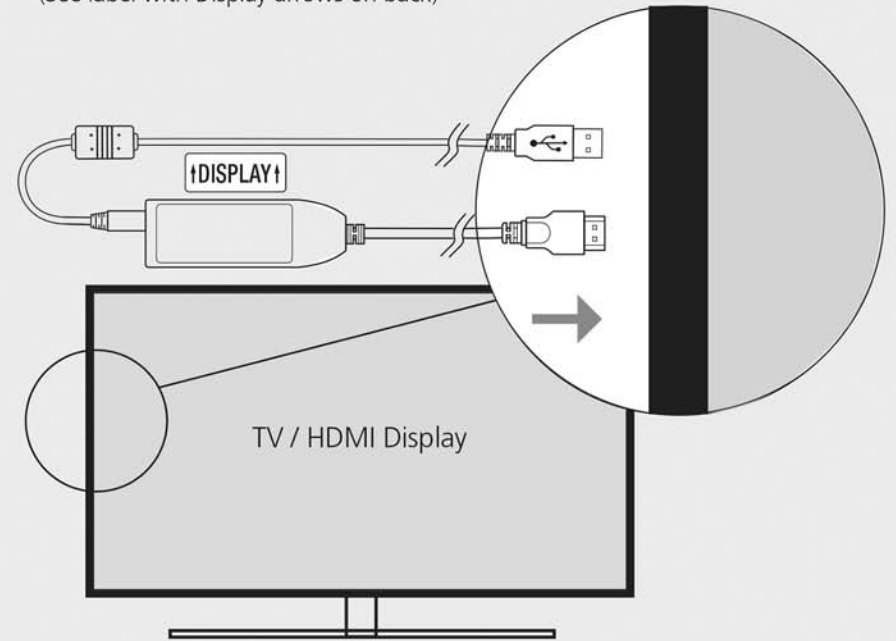
3. Plug **USB cable** into **Display Converter**



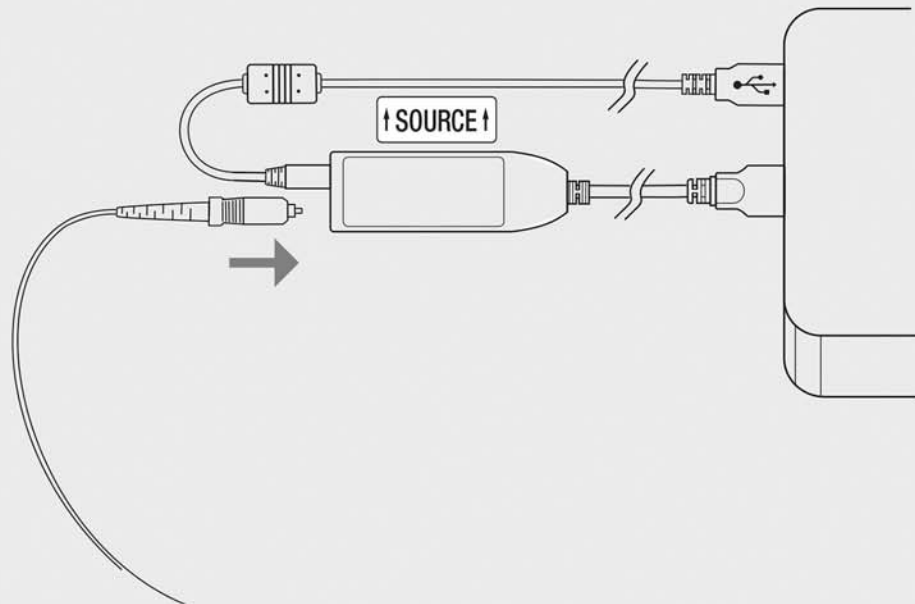
4. Plug both **Source HDMI and USB cables** into the HDMI video source (See label with Source arrows on back)



5. Plug both **Display HDMI and USB cables** into the HDMI display (See label with Display arrows on back)



6. Plug one end of **Fiber Cable** into the **Source Converter**



7. Plug the other end of the **Fiber Cable** into the **Display Converter**. The cable will automatically sync to the settings source.

